

# MUNI

## Building a healthy research infrastructures ecosystem

NARMA conference, 21. 3. 2023

Ondřej Hradil, Masaryk University



# Where do I come from?

- Masaryk University, Brno, Czech Republic
- 2nd biggest university in the country
- 10 faculties
- 32.000 students
- Involved in 15 national RIs and 12 ESFRI RIs



MUNI

# Research infrastructures in general

# What are research infrastructures

*EU Regulation on establishing Horizon Europe:*

'research infrastructures' means **facilities that provide resources and services for the research communities** to conduct research and foster innovation in their fields, including the associated human resources, major equipment or sets of instruments; knowledge-related facilities such as collections, archives or scientific data infrastructures; computing systems, communication networks and any other infrastructure of a unique nature and open to external users, essential to achieve excellence in R&I;

# What are research infrastructures

they may, where relevant, **be used beyond research**, for example for education or public services

they may be '**single sited**', '**virtual**' or '**distributed**';

which subject area? ANY

# What is NOT research infrastructure

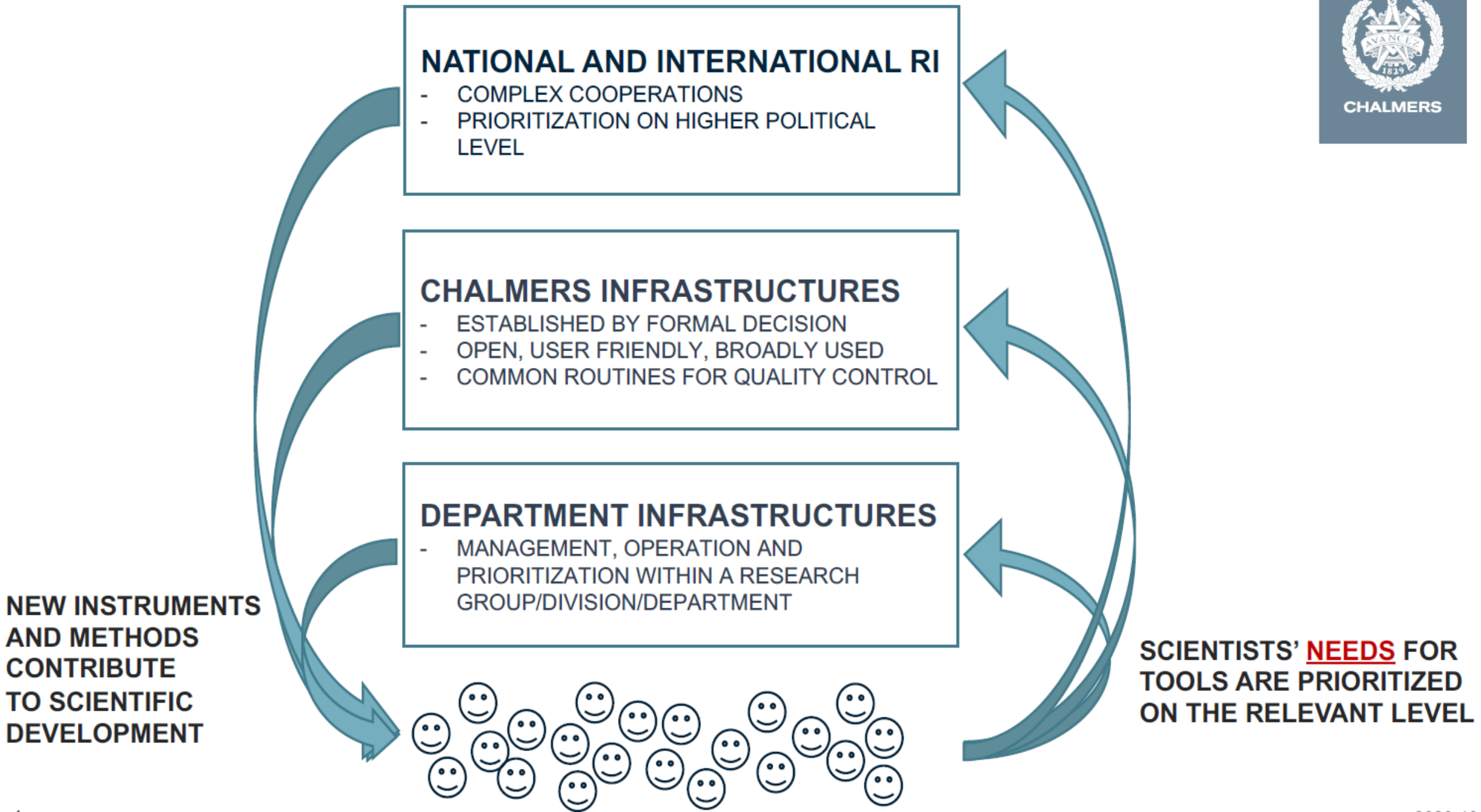
*„There are 2 pieces of equipment in my lab, I am happy to share them with the others“*

## **Unclear access conditions:**

- Conflict of interest, e.g. „only for friends“
- Pricing, e.g. in exchange for co-authorship
- When I can use them and how they are available
- Up to the equipment owner if it is shared



**Unclear organisational separation (equipment, people, etc.) in the given legal entity (university, faculty, department)**



# Research infrastructures

- Are not research projects
- Are like companies (business plans)
- Need long term funding
- Need institutional commitment



# Careers in research infrastructures

- A dedicated career track for RI personnel is needed
- Different format of evaluation (as compared to researchers) = not research papers, but service quality, role of acknowledgements

MUNI

ESFRI

# ESFRI

- European Strategic Forum on Research Infrastructures
- Coordination of EU member states
- Not a funding body!
- Awards quality label = listing on ESFRI Roadmap

# ESFRI evolution

2002 → 2006 → 2008 → 2010 → 2016 → 2018 → 2021



**Hans Chang**

**ESFRI Creation**  
established with  
a mandate from  
the Council of  
the EU



**John Wood**

**1st ROADMAP** for  
the construction  
and development  
of the next  
generation of  
pan-European RIs



**Carlo Rizzuto**

**1st UPDATE**  
Increasing the  
number of RIs  
of pan-  
European  
relevance



**Beatrix  
Vierkorn-Rudolph**

**2nd UPDATE**  
focusing on  
Energy, Food and  
Biology



**John Womersley**

**Update process**  
identified  
projects expected  
to move to  
**implementation** in  
<10 years from  
their first inclusion  
on the Roadmap.



**Giorgio Rossi**

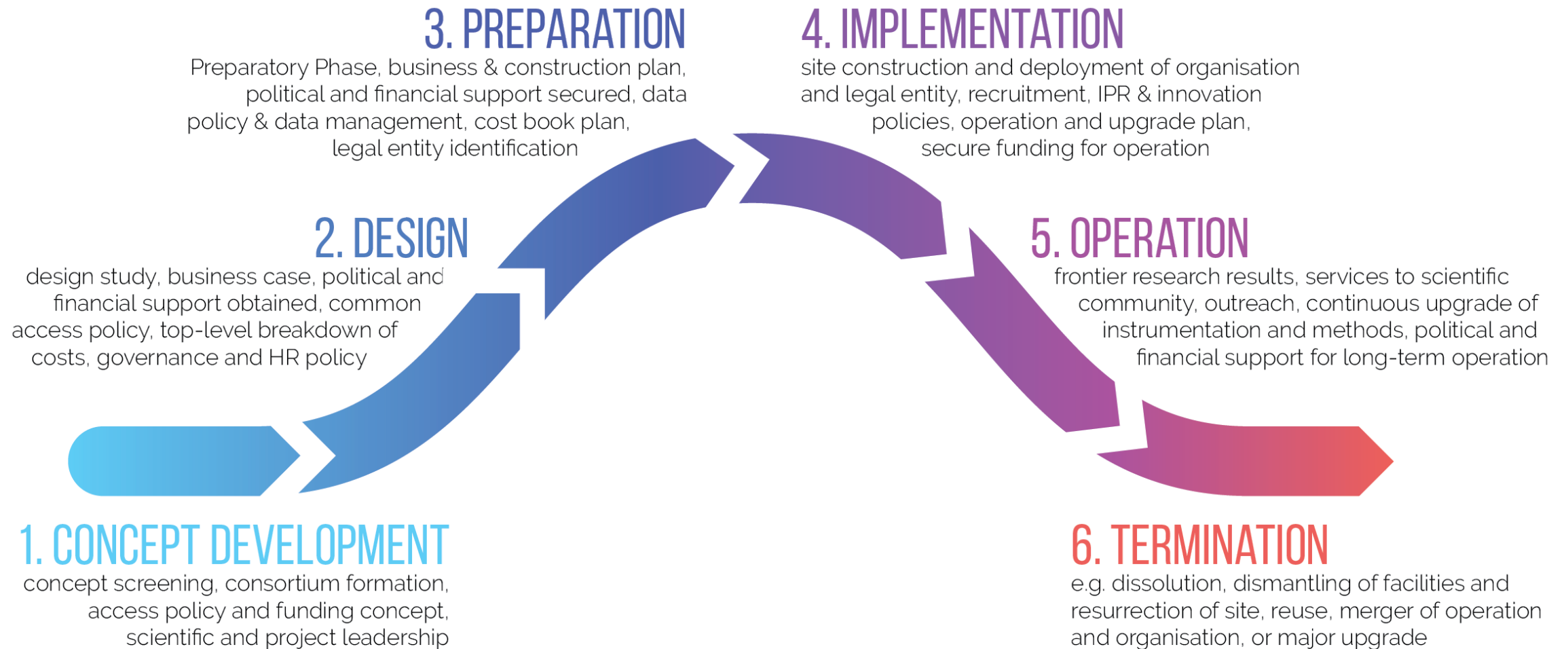
**Consolidation**  
& incorporation  
of the mandates  
of Council:  
sustainability,  
innovation, and  
hub of funders  
of e-infra



**Jan Hrušák**

**Integration**  
& relevance  
strategic  
positioning  
in ERA;  
paradigm  
shift from  
planning to  
operation

# ESFRI lifecycle approach



## Czech strategy for RI funding

# RI funding in the Czech Republic

- Funding given by the Ministry after approval by the government
- All projects on the roadmap funded
- Regular evaluation of RIs by international peer review:
  - 2014, 2017, 2021
  - now 5 year window
  - More emphasis given on **socio-economic impact + bibliometric analysis**
- New funding cycled started in 2023

# Czech RI Roadmap (in the making)

- 44 projects on the Roadmap
  - Physical Sciences and Engineering - 13 projects
  - Energy – 6 projects
  - Environment – 6 projects
  - Biological and medical sciences - 11 projects
  - Social sciences and humanities – 7 projects
  - E-infrastructures – 1 project





# RI funding in the Czech Republic

- Complementary funding of RIs:
  - RI operating costs – national budget
  - RI investments – EU structural funds
  - ERIC membership fees – dedicated ministry funding



**CTLS 2023**  
27<sup>TH</sup> - 29<sup>TH</sup> JUNE | DUBLIN IRELAND  
Core Technologies for Life Sciences

# CTLS 2023

## SAVE THE DATE



27<sup>TH</sup> - 29<sup>TH</sup> JUNE 2023



CROKE PARK, DUBLIN

### What is CTLS?

CORE TECHNOLOGIES FOR LIFE SCIENCES is a networking non-profit association that brings together staff working across the world in core facilities, research infrastructures and other shared resource laboratories. It provides a platform for members to network, discuss emerging technologies and exchange information on best practices. We support the career development of our members throughout their careers.

### Who Should Attend?

- Core Facilities Workers
- Technicians
- Facility Managers
- PIs
- Research Scientists
- Lab Managers
- Administrative Staff

<https://ctls-org.eu/>

[ctls2023@abbey.ie](mailto:ctls2023@abbey.ie)

+353 1 6486 130

MUNI